



**ERNESTO
KNORR**
FEB 09 APR 08
*DINÂMICAS
DE ENCONTRO*



MUSEU
INTERNACIONAL
ESCULTURA
CONTEMPORÂNEA

SANTO TIRSO

Ernesto Knorr's earliest approaches to art were materialised through clay, a medium that he often continues to use for building the scale models of some of his pieces. Along his artistic career, however, he has used a number of materials, such as wood, gesso, bronze and steel. It is with the latter, in its three varieties - plain, painted and weathered steel - that he has managed to infuse his sculptures with the poetic qualities needed to bring forward the occupation of space through the creation of volumes.

The collection of pieces currently found in the Santo Tirso International Museum of Contemporary Sculpture features Knorr's most characteristic production, as it includes fifteen pieces from different series: *Consecuencia*, *Columna*, *Duple*, *Equilibrio*, *Inclinado*, *Progresión*, *Umbral* and *Ventana*. Most of them were made in weathered steel and two in painted steel. Designed from 2005 onwards, many of the pieces, however, were produced in 2017. Some models, sketches and engravings complete the exhibit.

Two sculptures have been placed outside the building, where they establish a dialogue with the surrounding environment, whereas those inside the museum encourage the viewer to wander about, while enjoying a physical and visual experience. The architectural singularity of the contemporary building signed by Álvaro Siza and Eduardo Souto de Moura, with its white marble floor, provides a contrast to the former hospice of the São Bento Monastery - refurbished by the same architects -, characterised by the warm shades of the wooden floor and the flood of natural light coming through the large windows. The combination of all these elements allows for a special relation-



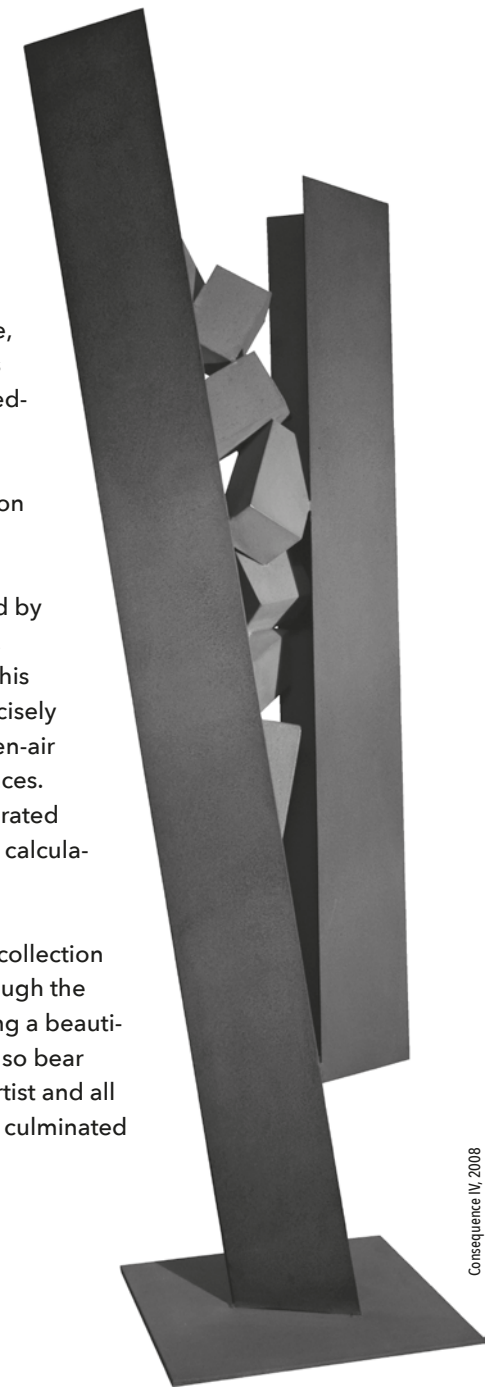
Equilibrium I, 2017

ship between the constructed space, the sculptures, and the way in which the viewer interacts with them.

This exhibition celebrates the artist's connection with a space filled with historical connotations and modern design features, where he displays his most representative sculptures, moved by the magical atmosphere of the venue, as well as by the numberless viewpoints suggested by each location, thus succeeding in channelling his creative drive through the constant search for the interplay of volumes, and the construction and deconstruction of shapes.

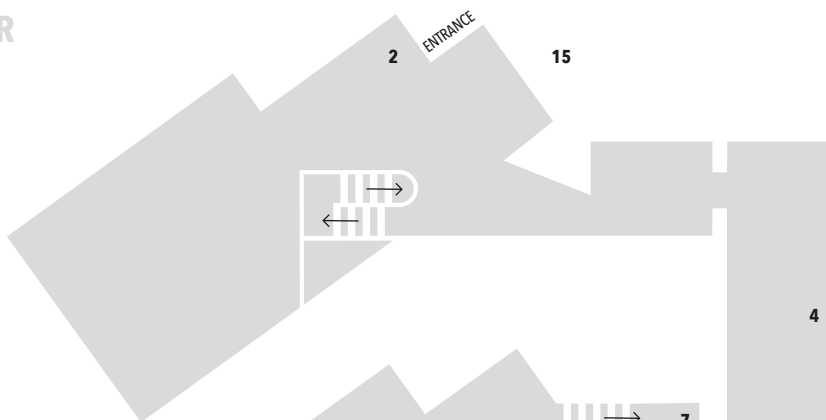
Ernesto Knorr's work may be recognised by its rigorous volumes and clean-cut lines. He has managed to control the scale of his sculptures, as well as to adapt them precisely to their sites, whether they are large open-air pieces, or smaller ones for enclosed spaces. All of them emanate a thoroughly elaborated simplicity, resulting from the meticulous calculation of proportions.

The careful interplay of balances in this collection conveys both aplomb and delicacy, through the thought-out display of segments showing a beautiful assembly of prisms. The sculptures also bear witness to the coming together of the artist and all those involved in this project, which has culminated in the present exhibition.

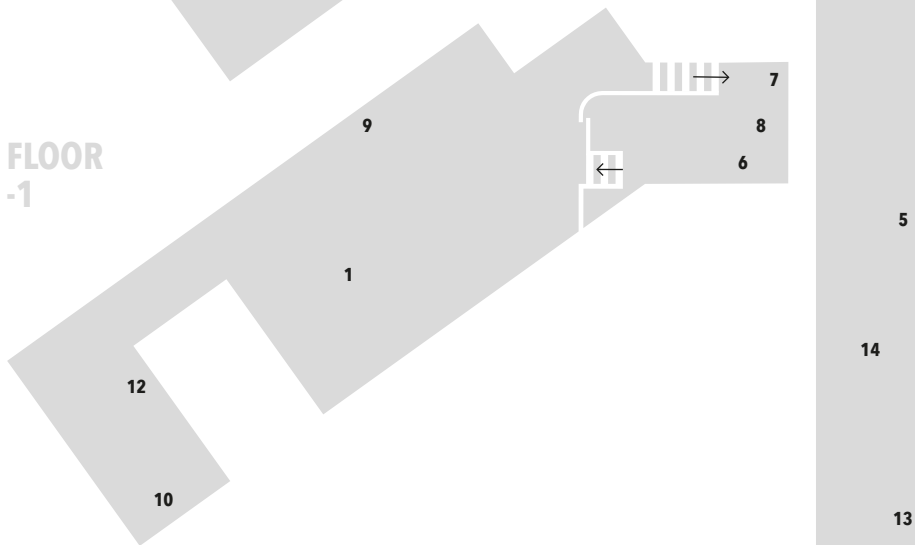


Consequence IV, 2008

FLOOR 0



FLOOR -1



1 HORIZONTAL DUPLÉ, 2018

2 THRESHOLD, 2018

3 EQUILIBRIUM I, 2017

4 EQUILIBRIUM II, 2017

5 INNER TENSION, 2007

6 COLUMN G, 2017

7 COLUMN M, 2017

8 COLUMN P, 2015

9 VERTICAL DUPLÉ, 2005

10 OPEN DUPLÉ, 2016

11 BLUE PROGRESSION, 2015

12 LEANING, 2016

13 CONSEQUENCE, 2008

14 WINDOW, 2007

15 VERTICAL DUPLÉ, 2018

11

14

13

3

ADMISSION FREE

Avenida Unisco Godiniz 100, 4780-366 Santo Tirso

N 41° 20' 39.2" W 8° 28' 20.4"

miec.cm-stirso.pt

mmap.cm-stirso.pt

museus@cm-stirso.pt

(+351) 252 830 410